

# CANRACK

METAL CENTER SYSTEMS

## CANTILEVER RACK STORAGE SYSTEM

The Canrack adjustable Cantilever Rack storage system is an economical and efficient way to store bars, rounds, angles, strips, sheets, lumber, etc. The Canrack system is easy to assemble. Complete rearrangement of the total rack layout can be accomplished with minimal cost.

The Canrack cantilever rack is engineered for versatility and safety. The arms are adjustable on 3 inch increments along the upright column height, making maximum use of available space. The arms are available in either straight or tapered design. Tapered arms compensate for arm deflection and offer additional working clearance. Arms are available in many lengths, up to 96".



The free standing upright columns are also available in straight and tapered design. Free standing tapered upright columns compensate for deflection from eccentric loading while maintaining necessary aisle clearances even at the top of a 48 foot rack.

Uprights are available in both single and double sided arrangements in heights up to 48 feet, which can be spaced at various intervals to meet the support needs of any load. The connector positively secures the arm to the column, through the rectangular pin, making adjustment for new loads or additional clearance easy.

### Features

- Arms are adjustable on 3 inch increments the entire upright column height
- Wedge-type connectors safely secure the arms in place.
- Tapered arms compensate for arm deflection and increase working clearance in the rack. (Straight arms available)
- Free standing upright columns have a tapered design to compensate for deflection from eccentric loading and maintain aisle clearances even at the top of a 48 foot rack. (Straight columns available)
- Uprights are offered in single or double arrangements. Single sided uprights are punched both sides for possible future use as doubles when extension bases are ordered, effectively doubling capacity.
- The rack is easy to assemble and can be rearranged to handle changing storage requirements, as well as plant relocation.
- Cold formed steel is used for all components to support more load per pound versus conventional hot-rolled structural sections.
- Welded base construction provides a safer, more rigid rack.

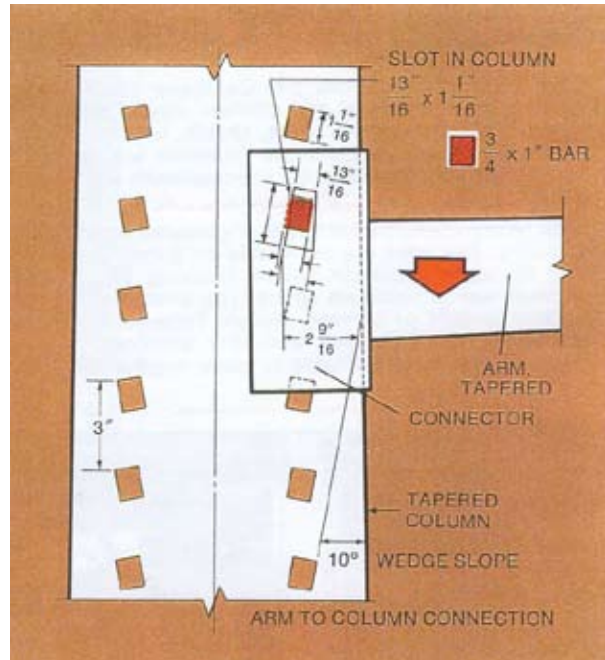
\* Blue with orange arms is the standard color – additional colors available on request.

Canrack Storage Systems Inc.  
6625 Tomken Road, Suite 209, Mississauga, Ont. L5T 2C2  
Tel: (905) 564-6250 Fax: (905) 564-6253  
E-mail: [info@canrack.com](mailto:info@canrack.com) Website: [www.canrack.com](http://www.canrack.com)

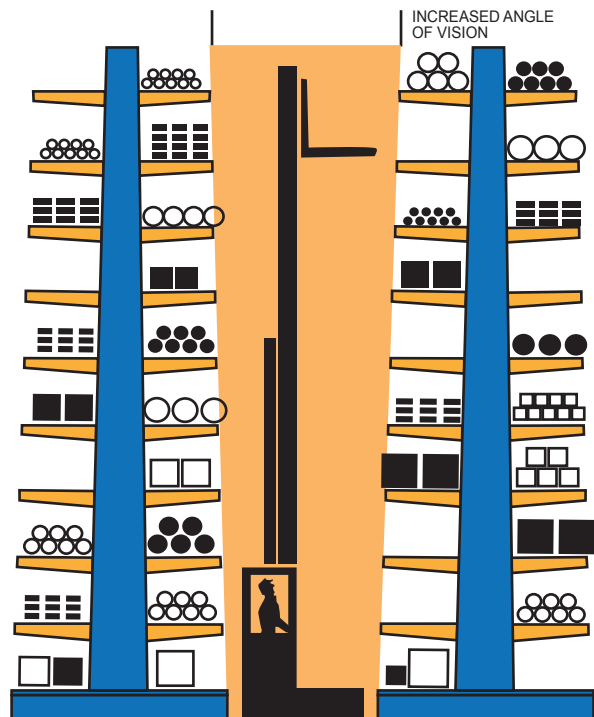
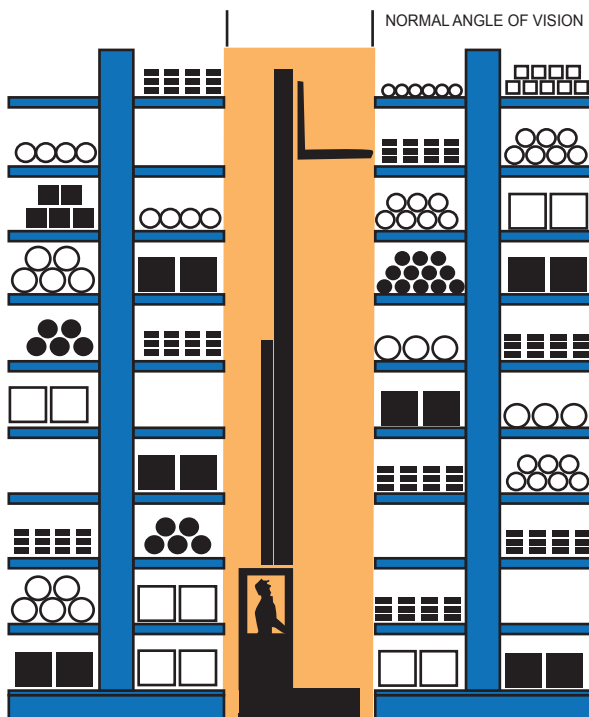
## The Canrack Rectangular Pin Connection

is designed to hold the arm to the upright column securely under load, but may be pulled out by hand when load is removed and arm location change is required. The exclusive design and

geometry of the rectangular pin, arm and column holes combine to form a downward force under load, wedging the pin into position and providing a positive lock. The rectangular pin provides a much greater bearing area than a round pin.



## Loaded System Straight Column vs. Loaded System Tapered columns



### Advantage

In a guided system, the tapered column allows tighter tolerance across the aisle between lowest arms, while providing greater visibility in the

upper area. The result is a savings in total floor area required and provides increased clearance at the top for the silder.